

## KV1.1 Polyclonal Antibody

### Description

<b>Product type</b>	Primary Antibody
<b>Code</b>	BT-AP04904
<b>Host</b>	Rabbit
<b>Isotype</b>	IgG
<b>Size</b>	20ul, 50ul, 100ul
<b>Immunogen</b>	The antiserum was produced against synthesized peptide derived from human KCNA1. AA range:256-305
<b>Mol wt</b>	56542
<b>Species reactivity</b>	Human, Mouse, Rat
<b>Clonality</b>	Polyclonal
<b>Recommended application</b>	WB, ELISA
<b>Concentration</b>	1 mg/ml
<b>Full name</b>	KV1.1 Antibody
<b>Synonyms</b>	KCNA1; Potassium voltage-gated channel subfamily A member 1; Voltage-gated K(+) channel HuK1; Voltage-gated potassium channel HBK1; Voltage-gated potassium channel subunit Kv1.1

**This product is for research use only, not for use in human, therapeutic or diagnostic procedure.**

### Background

KCNA1 encodes a voltage-gated delayed potassium channel that is phylogenetically related to the Drosophila Shaker channel. Potassium voltage-gated channel subfamily A member 1 has six putative transmembrane segments (S1-S6), and the loop between S5 and S6 forms the pore and contains the conserved selectivity filter motif (GYGD). The functional channel is a homotetramer. The N-terminus of the channel is associated with beta subunits that can modify the inactivation properties of the channel as well as affect expression levels. The C-terminus of the channel is complexed to a PDZ domain protein that is responsible for channel targeting. Mutations in this gene have been associated with myokymia with periodic ataxia (AEMK).

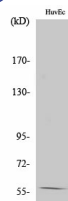
### Recommended Dilution

WB: 1: 500 - 1: 2000

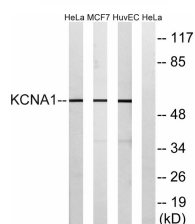
ELISA: 1: 10000

Not yet tested in other applications.

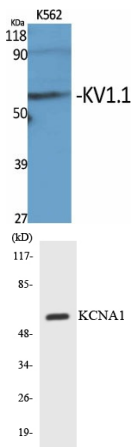
### Images



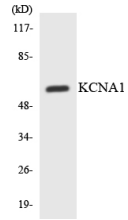
Western Blot analysis of HeLa cells using KV1.1 Polyclonal Antibody diluted at 1:2000



Western blot analysis of lysates from HUVEC, MCF-7, and HeLa cells, using KCNA1 Antibody. The lane on the right is blocked with the synthesized peptide.



Western Blot analysis of various cells using KV1.1 Polyclonal Antibody diluted at 1:2000



Western blot analysis of the lysates from HepG2 cells using KCNA1 antibody.

### Storage

-20°C for one year

501 Changsheng S Rd, Nanhu Dist, Jiaxing, Zhejiang, China

Tel: 86 21 31007137 | E-mail: [save@bt-laboratory.com](mailto:save@bt-laboratory.com) | [www.bt-laboratory.com](http://www.bt-laboratory.com)