

SSRB Rabbit Polyclonal Antibody

Description

| | |
|-------------------------|---|
| Product type | Primary Antibody |
| Code | BT-AP04907 |
| Host | Rabbit |
| Isotype | IgG |
| Size | 20ul, 50ul, 100ul |
| Immunogen | Synthesized peptide derived from human SSRB |
| Mol wt | 20130 |
| Species reactivity | Human, Mouse |
| Clonality | Polyclonal |
| Recommended application | WB |
| Concentration | 1 mg/ml |
| Full name | SSRB |
| Synonyms | SSRB |

This product is for research use only, not for use in human, therapeutic or diagnostic procedure.

Background

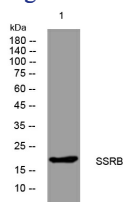
The signal sequence receptor (SSR) is a glycosylated endoplasmic reticulum (ER) membrane receptor associated with protein translocation across the ER membrane. The SSR consists of 2 subunits| a 34-kD glycoprotein (alpha-SSR or SSR1) and a 22-kD glycoprotein (beta-SSR or SSR2). The human beta-signal sequence receptor gene (SSR2) maps to chromosome bands 1q21-q23.

Recommended Dilution

WB: 1: 500 - 1: 2000

Not yet tested in other applications.

Images



Western blot analysis of lysates from A431 cells, primary antibody was diluted at 1:1000, 4°C overnight

Storage

-20°C for 1 year

501 Changsheng S Rd, Nanhu Dist, Jiaxing, Zhejiang, China

Tel: 86 21 31007137 | E-mail: save@bt-laboratory.com | www.bt-laboratory.com