

## SSX6 Rabbit Polyclonal Antibody

### Description

Product type	Primary Antibody
Code	BT-AP04912
Host	Rabbit
Isotype	IgG
Size	20ul, 50ul, 100ul
Immunogen	Synthesized peptide derived from human SSX6
Mol wt	20680
Species reactivity	Human, Rat, Mouse
Clonality	Polyclonal
Recommended application	WB
Concentration	1 mg/ml
Full name	SSX6
Synonyms	SSX6

This product is for research use only, not for use in human, therapeutic or diagnostic procedure.

### Background

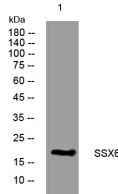
This gene belongs to the family of highly homologous synovial sarcoma X (SSX) breakpoint proteins. These proteins may function as transcriptional repressors. They are also capable of eliciting spontaneously humoral and cellular immune responses in cancer patients and are potentially useful targets in cancer vaccine-based immunotherapy. SSX1| SSX2 and SSX4 genes have been involved in the t(X;18) translocation characteristically found in all synovial sarcomas. This gene is classified as a pseudogene because a splice donor in the 3' UTR has changed compared to other family members rendering the transcript a candidate for nonsense-mediated mRNA decay (NMD).

### Recommended Dilution

WB: 1: 500 - 1: 2000

Not yet tested in other applications.

### Images



Western blot analysis of lysates from HeLa cells, primary antibody was diluted at 1:1000, 4°C overnight

### Storage

-20°C for 1 year