

KV3.1 Polyclonal Antibody

Description

Product type	Primary Antibody
Code	BT-AP04919
Host	Rabbit
Isotype	IgG
Size	20ul, 50ul, 100ul
Immunogen	Synthesized peptide derived from KV3.1 . at AA range: 190-270
Mol wt	57942
Species reactivity	Human, Mouse, Rat
Clonality	Polyclonal
Recommended application	WB, IHC-p, ELISA
Concentration	1 mg/ml
Full name	KV3.1 Antibody
Synonyms	KCNC1; Potassium voltage-gated channel subfamily C member 1; NGK2; Voltage-gated potassium channel subunit Kv3.1; Voltage-gated potassium channel subunit Kv4

This product is for research use only, not for use in human, therapeutic or diagnostic procedure.

Background

KCNC1 encodes a member of a family of integral membrane proteins that mediate the voltage-dependent potassium ion permeability of excitable membranes. Alternative splicing is thought to result in two transcript variants encoding isoforms that differ at their C-termini. These isoforms have had conflicting names in the literature: the longer isoform has been called both "b" and "alpha", while the shorter isoform has been called both "a" and "beta".

Recommended Dilution

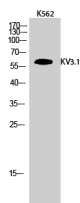
WB: 1: 500 - 1: 2000

IHC: 1: 100 - 1: 300

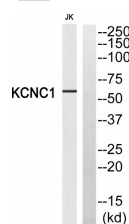
ELISA: 1: 5000

Not yet tested in other applications.

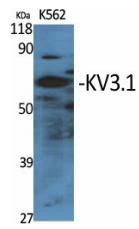
Images



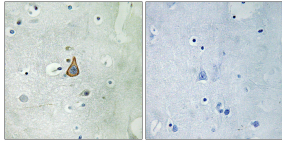
Western Blot analysis of K562 cells using KV3.1 Polyclonal Antibody



Western blot analysis of KCNC1 Antibody. The lane on the right is blocked with the KCNC1 peptide.



Western Blot analysis of various cells using KV3.1 Polyclonal Antibody



Immunohistochemistry analysis of paraffin-embedded human brain, using KCNC1 Antibody. The lane on the right is blocked with the KCNC1 peptide.

Storage

-20°C for one year

501 Changsheng S Rd, Nanhu Dist, Jiaxing, Zhejiang, China

Tel: 86 21 31007137 | E-mail: save@bt-laboratory.com | www.bt-laboratory.com