

KV3.2 Polyclonal Antibody

Description

Product type	Primary Antibody
Code	BT-AP04920
Host	Rabbit
Isotype	IgG
Size	20ul, 50ul, 100ul
Immunogen	The antiserum was produced against synthesized peptide derived from human Potassium Channel Kv3.2b. AA range:589-638
Mol wt	70226
Species reactivity	Human, Mouse, Rat
Clonality	Polyclonal
Recommended application	WB, IHC-p, ELISA
Concentration	1 mg/ml
Full name	KV3.2 Antibody
Synonyms	KCNC2; Potassium voltage-gated channel subfamily C member 2; Voltage-gated potassium channel Kv3.2

This product is for research use only, not for use in human, therapeutic or diagnostic procedure.

Background

The Shaker gene family of Drosophila encodes components of voltage-gated potassium channels and is comprised of four subfamilies. Based on sequence similarity, KCNC2 is similar to one of these subfamilies, namely the Shaw subfamily. Potassium voltage-gated channel subfamily C member 2 encoded by KCNC2 belongs to the delayed rectifier class of channel proteins and is an integral membrane protein that mediates the voltage-dependent potassium ion permeability of excitable membranes. Several transcript variants encoding different isoforms have been found for this gene.

Recommended Dilution

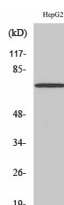
WB: 1: 500 - 1: 2000

IHC: 1: 100 - 1: 300

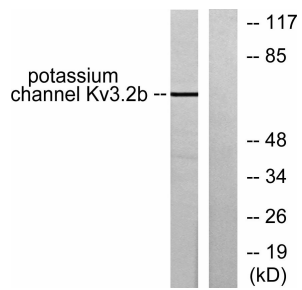
ELISA: 1: 10000

Not yet tested in other applications.

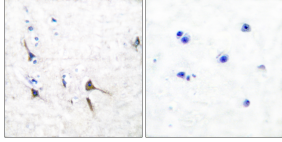
Images



Western Blot analysis of various cells using KV3.2 Polyclonal Antibody



Western blot analysis of lysates from HepG2 cells, using Potassium Channel Kv3.2b Antibody. The lane on the right is blocked with the synthesized peptide.



Immunohistochemistry analysis of paraffin-embedded human brain tissue, using Potassium Channel Kv3.2b Antibody. The picture on the right is blocked with the synthesized peptide.

Storage

-20°C for one year

501 Changsheng S Rd, Nanhu Dist, Jiaxing, Zhejiang, China

Tel: 86 21 31007137 | E-mail: save@bt-laboratory.com | www.bt-laboratory.com