

## KV4.1 Polyclonal Antibody

### Description

<b>Product type</b>	Primary Antibody
<b>Code</b>	BT-AP04922
<b>Host</b>	Rabbit
<b>Isotype</b>	IgG
<b>Size</b>	20ul, 50ul, 100ul
<b>Immunogen</b>	The antiserum was produced against synthesized peptide derived from human KCND1. AA range:558-607
<b>Mol wt</b>	71330
<b>Species reactivity</b>	Human, Mouse
<b>Clonality</b>	Polyclonal
<b>Recommended application</b>	WB, IHC-p, ELISA
<b>Concentration</b>	1 mg/ml
<b>Full name</b>	KV4.1 Antibody
<b>Synonyms</b>	KCND1; Potassium voltage-gated channel subfamily D member 1; Voltage-gated potassium channel subunit Kv4.1

This product is for research use only, not for use in human, therapeutic or diagnostic procedure.

### Background

KCND1 encodes a multipass membrane protein that comprises the pore subunit of the voltage-gated A-type potassium channel, which functions in the repolarization of membrane action potentials. Activity of voltage-gated potassium channels is important in a number of physiological processes, among them the regulation of neurotransmitter release, heart rate, insulin secretion, and smooth muscle contraction.

### Recommended Dilution

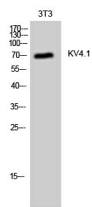
WB: 1: 500 - 1: 2000

IHC: 1: 100 - 1: 300

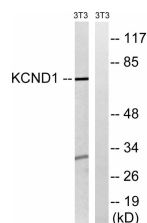
ELISA: 1: 20000

Not yet tested in other applications.

### Images



Western Blot analysis of 3T3 cells using KV4.1 Polyclonal Antibody



Western blot analysis of lysates from NIH/3T3 cells, using KCND1 Antibody. The lane on the right is blocked with the synthesized peptide.

## Storage

-20°C for one year

501 Changsheng S Rd, Nanhu Dist, Jiaxing, Zhejiang, China

Tel: 86 21 31007137 | E-mail: [save@bt-laboratory.com](mailto:save@bt-laboratory.com) | [www.bt-laboratory.com](http://www.bt-laboratory.com)