

KV9.2 Polyclonal Antibody

Description

Product type	Primary Antibody
Code	BT-AP04925
Host	Rabbit
Isotype	IgG
Size	20ul, 50ul, 100ul
Immunogen	The antiserum was produced against synthesized peptide derived from human KCNS2. AA range:197-246
Mol wt	54237
Species reactivity	Human, Mouse, Rat
Clonality	Polyclonal
Recommended application	WB, ELISA
Concentration	1 mg/ml
Full name	KV9.2 Antibody
Synonyms	KCNS2; KIAA1144; Potassium voltage-gated channel subfamily S member 2; Delayed-rectifier K(+) channel alpha subunit 2; Voltage-gated potassium channel subunit Kv9.2

This product is for research use only, not for use in human, therapeutic or diagnostic procedure.

Background

KCNS2 is a Protein Coding gene. Potassium voltage-gated channel subfamily S member 2 does not form functional channels by itself. Can form functional heterotetrameric channels with KCNB1 and KCNB2; modulates the delayed rectifier voltage-gated potassium channel activation and deactivation rates of KCNB1 and KCNB2. Among its related pathways are Transmission across Chemical Synapses and Potassium Channels. Gene Ontology (GO) annotations related to this gene include ion channel activity and delayed rectifier potassium channel activity. An important paralog of this gene is KCNB1.

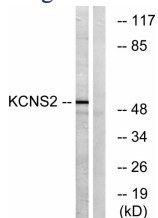
Recommended Dilution

WB: 1: 500 - 1: 2000

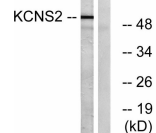
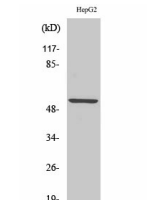
ELISA: 1: 40000

Not yet tested in other applications.

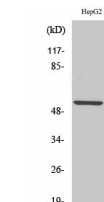
Images



Western blot analysis of lysates from HepG2 cells, using KCNS2 Antibody. The lane on the right is blocked with the synthesized peptide.

Western Blot analysis of various cells using KV9.2 Polyclonal Antibody



Storage

-20°C for one year

501 Changsheng S Rd, Nanhu Dist, Jiaxing, Zhejiang, China

Tel: 86 21 31007137 | E-mail: save@bt-laboratory.com | www.bt-laboratory.com