

KVBeta.3 Polyclonal Antibody

Description

Product type	Primary Antibody
Code	BT-AP04926
Host	Rabbit
Isotype	IgG
Size	20ul, 50ul, 100ul
Immunogen	The antiserum was produced against synthesized peptide derived from human KCNAB3. AA range:293-342
Mol wt	43670
Species reactivity	Human, Mouse, Rat
Clonality	Polyclonal
Recommended application	WB, IHC-p, ELISA
Concentration	1 mg/ml
Full name	KVBeta.3 Antibody
Synonyms	KCNAB3; KCNA3B; Voltage-gated potassium channel subunit beta-3; K(+) channel subunit beta-3; Kv-beta-3

This product is for research use only, not for use in human, therapeutic or diagnostic procedure.

Background

KCNAB3 encodes a member of the potassium channel, voltage-gated, shaker-related subfamily. Voltage-gated potassium channel subunit beta-3 is one of the beta subunits, which are auxiliary proteins associating with functional Kv-alpha subunits. Voltage-gated potassium channel subunit beta-3 forms a heterodimer with the potassium voltage-gated channel, shaker-related subfamily, member 5 gene product and regulates the activity of the alpha subunit.

Recommended Dilution

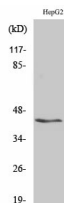
WB: 1: 500 - 1: 2000

IHC: 1: 100 - 1: 300

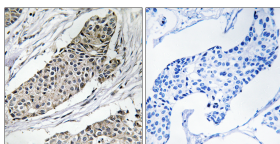
ELISA: 1: 10000

Not yet tested in other applications.

Images



Western Blot analysis of various cells using KVβ.3 Polyclonal Antibody



Immunohistochemistry analysis of paraffin-embedded human breast carcinoma tissue, using KCNAB3 Antibody. The picture on the right is blocked with the synthesized peptide.

Storage

-20°C for one year

501 Changsheng S Rd, Nanhu Dist, Jiaxing, Zhejiang, China

Tel: 86 21 31007137 | E-mail: save@bt-laboratory.com | www.bt-laboratory.com