

Lad Polyclonal Antibody

Description

Product type	Primary Antibody
Code	BT-AP04928
Host	Rabbit
Isotype	IgG
Size	20ul, 50ul, 100ul
Immunogen	The antiserum was produced against synthesized peptide derived from human SH2D2A. AA range:211-260
Mol wt	42934
Species reactivity	Human
Clonality	Polyclonal
Recommended application	WB, IHC-p, ELISA
Concentration	1 mg/ml
Full name	Lad Antibody
Synonyms	SH2D2A; SCAP; TSAD; VRAP; SH2 domain-containing protein 2A; SH2 domain-containing adapter protein; T cell-specific adapter protein; TSA; VEGF receptor-associated protein

This product is for research use only, not for use in human, therapeutic or diagnostic procedure.

Background

SH2D2A encodes an adaptor protein SH2 domain-containing protein 2A thought to function in T-cell signal transduction. A related protein in mouse is responsible for the activation of lymphocyte-specific protein-tyrosine kinase and functions in downstream signaling. Alternative splicing results in multiple transcript variants.

Recommended Dilution

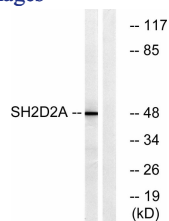
WB: 1: 500 - 1: 2000

IHC: 1: 100 - 1: 300

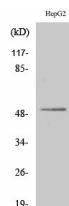
ELISA: 1: 10000

Not yet tested in other applications.

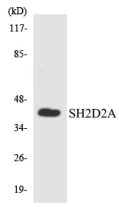
Images



Western blot analysis of lysates from HepG2 cells, using SH2D2A Antibody. The lane on the right is blocked with the synthesized peptide.



Western Blot analysis of various cells using Lad Polyclonal Antibody



Western blot analysis of the lysates from HUVEC cells using SH2D2A antibody.

Storage

-20°C for one year

501 Changsheng S Rd, Nanhu Dist, Jiaxing, Zhejiang, China

Tel: 86 21 31007137 | E-mail: save@bt-laboratory.com | www.bt-laboratory.com