

## Lambda 5 Polyclonal Antibody

### Description

<b>Product type</b>	Primary Antibody
<b>Code</b>	BT-AP04930
<b>Host</b>	Rabbit
<b>Isotype</b>	IgG
<b>Size</b>	20ul, 50ul, 100ul
<b>Immunogen</b>	The antiserum was produced against synthesized peptide derived from human IGLL1. AA range:161-210
<b>Mol wt</b>	22963
<b>Species reactivity</b>	Human
<b>Clonality</b>	Polyclonal
<b>Recommended application</b>	IHC-p, WB, ELISA
<b>Concentration</b>	1 mg/ml
<b>Full name</b>	lambda 5 Antibody
<b>Synonyms</b>	IGLL1; IGL1; Immunoglobulin lambda-like polypeptide 1; CD179 antigen-like family member B; Ig lambda-5; Immunoglobulin omega polypeptide; Immunoglobulin-related protein 14.1; CD antigen CD179b

**This product is for research use only, not for use in human, therapeutic or diagnostic procedure.**

### Background

The preB cell receptor is found on the surface of proB and preB cells, where it is involved in transduction of signals for cellular proliferation, differentiation from the proB cell to the preB cell stage, allelic exclusion at the Ig heavy chain gene locus, and promotion of Ig light chain gene rearrangements. The preB cell receptor is composed of a membrane-bound Ig mu heavy chain in association with a heterodimeric surrogate light chain. IGLL1 encodes one of the surrogate light chain subunits and is a member of the immunoglobulin gene superfamily. This gene does not undergo rearrangement. Mutations in this gene can result in B cell deficiency and agammaglobulinemia, an autosomal recessive disease in which few or no gamma globulins or antibodies are made. Two transcript variants encoding different isoforms have been found for this gene.

### Recommended Dilution

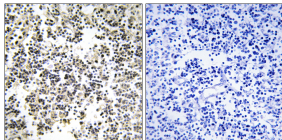
WB: 1: 500 - 2000

ELISA: 1: 40000

IHC: 1: 100 - 1: 300

Not yet tested in other applications.

### Images



Immunohistochemistry analysis of paraffin-embedded human lymph node, using IGLL1 Antibody. The picture on the right is blocked with the synthesized peptide.

### Storage

-20°C for one year