

Lambda 5 Polyclonal Antibody

Description

Product type	Primary Antibody
Code	BT-AP04931
Host	Rabbit
Isotype	IgG
Size	20ul, 50ul, 100ul
Immunogen	The antiserum was produced against synthesized peptide derived from the C-terminal region of human IGLL1. AA range:151-200
Mol wt	22963
Species reactivity	Human
Clonality	Polyclonal
Recommended application	WB, IHC-p, ELISA
Concentration	1 mg/ml
Full name	lambda 5 Antibody
Synonyms	IGLL1; IGL1; Immunoglobulin lambda-like polypeptide 1; CD179 antigen-like family member B; Ig lambda-5; Immunoglobulin omega polypeptide; Immunoglobulin-related protein 14.1; CD179b

This product is for research use only, not for use in human, therapeutic or diagnostic procedure.

Background

Lambda 5 (also called Immunoglobulin lambda-like polypeptide 1 or CD179b antigen) and VpreB comprise the surrogate light chain of the pre-B cell receptor complex. SL chain is also part of a quality control mechanism that tests a m-chain for its ability to pair with conventional L chains. It can form Ig-like complexes with the heavy (H) chain, the DHJHC m-protein or the p55 chain. Production of the surrogate light chain begins at the stage of pro-B cells, continues during the pre-B-cell stage and halts at the immature B cell stage. Once pre-BCR is expressed, SL chain expression is turned off. As pre-B II cells proliferate, SL is diluted out, thus limiting pre-BCR formation. Lambda 5 is critical for B cell development in mammals. Expression of Lambda 5 is highest in liver, pre- B-lymphocytes and bone marrow, the major source of B cell precursors.

Recommended Dilution

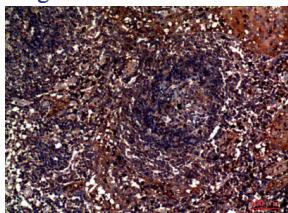
WB: 1: 500 - 1: 2000

IHC-p: 1: 100 - 1: 300

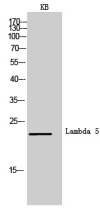
ELISA: 1: 10000

Not yet tested in other applications.

Images



Immunohistochemical analysis of paraffin-embedded human-lymph, antibody was diluted at 1:100



Western Blot analysis of KB cells using Lambda 5 Polyclonal Antibody. Secondary antibody was diluted at 1:20000

Storage

-20°C for one year

501 Changsheng S Rd, Nanhu Dist, Jiaxing, Zhejiang, China

Tel: 86 21 31007137 | E-mail: save@bt-laboratory.com | www.bt-laboratory.com