

Lamin A/C Polyclonal Antibody

Description

Product type	Primary Antibody
Code	BT-AP04933
Host	Rabbit
Isotype	IgG
Size	20ul, 50ul, 100ul
Immunogen	The antiserum was produced against synthesized peptide derived from human Lamin A. AA range:2-51
Mol wt	74139
Species reactivity	Human, Mouse, Rat
Clonality	Polyclonal
Recommended application	WB, IHC-p, ELISA
Concentration	1 mg/ml
Full name	Lamin A/C Antibody
Synonyms	LMNA; LMN1; Prelamin-A/C

This product is for research use only, not for use in human, therapeutic or diagnostic procedure.

Background

The nuclear lamina consists of a two-dimensional matrix of proteins located next to the inner nuclear membrane. The lamin family of proteins make up the matrix and are highly conserved in evolution. During mitosis, the lamina matrix is reversibly disassembled as the lamin proteins are phosphorylated. Lamin proteins are thought to be involved in nuclear stability, chromatin structure and gene expression. Vertebrate lamins consist of two types, A and B. Alternative splicing results in multiple transcript variants. Mutations in LMNA lead to several diseases: emery-Dreifuss muscular dystrophy, familial partial lipodystrophy, limb girdle muscular dystrophy, dilated cardiomyopathy, Charcot-Marie-Tooth disease, and Hutchinson-Gilford progeria syndrome.

Recommended Dilution

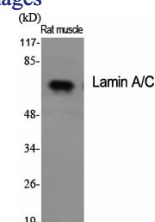
WB: 1: 500 - 1: 2000

IHC: 1: 100 - 1: 300

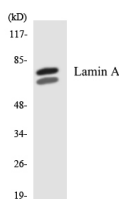
ELISA: 1: 10000

Not yet tested in other applications.

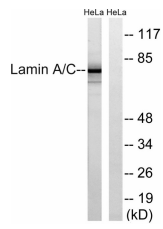
Images



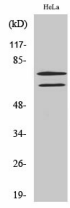
Western Blot analysis of various cells using Lamin A/C Polyclonal Antibody diluted at 1:1000



Western blot analysis of the lysates from 293 cells using Lamin A antibody.



Western blot analysis of lysates from HeLa cells, treated with paclitaxel 1uM 24h, using Lamin A Antibody.
The lane on the right is blocked with the synthesized peptide.



Western Blot analysis of HeLa cells using Lamin A/C Polyclonal Antibody diluted at 1:1000

Storage

-20°C for one year

501 Changsheng S Rd, Nanhu Dist, Jiaxing, Zhejiang, China

Tel: 86 21 31007137 | E-mail: save@bt-laboratory.com | www.bt-laboratory.com