

## Lamin B1 Polyclonal Antibody

### Description

<b>Product type</b>	Primary Antibody
<b>Code</b>	BT-AP04934
<b>Host</b>	Rabbit
<b>Isotype</b>	IgG
<b>Size</b>	20ul, 50ul, 100ul
<b>Immunogen</b>	The antiserum was produced against synthesized peptide derived from the Internal region of human LMNB1. AA range:391-440
<b>Mol wt</b>	66408
<b>Species reactivity</b>	Human, Mouse, Rat
<b>Clonality</b>	Polyclonal
<b>Recommended application</b>	WB, IHC-p, ELISA
<b>Concentration</b>	1 mg/ml
<b>Full name</b>	Lamin B1 Antibody
<b>Synonyms</b>	LMNB1; LMN2; LMNB; Lamin-B1

This product is for research use only, not for use in human, therapeutic or diagnostic procedure.

### Background

LMNB1 encodes one of the two B-type lamin proteins and is a component of the nuclear lamina. A duplication of LMNB1 is associated with autosomal dominant adult-onset leukodystrophy (ADLD). Alternative splicing results in multiple transcript variants.

### Recommended Dilution

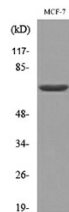
WB: 1: 500 - 1: 2000

IHC-p: 1: 100 - 300

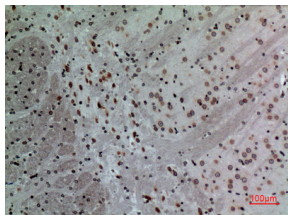
ELISA: 1: 20000

Not yet tested in other applications.

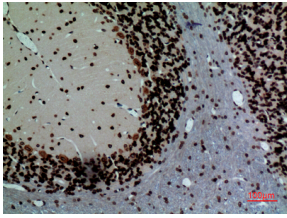
### Images



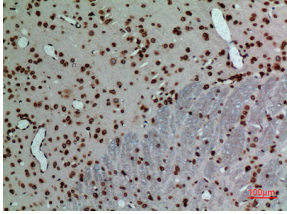
Western blot analysis of lysate from MCF7 cells, using LMNB1 Antibody.



Immunohistochemical analysis of paraffin-embedded mouse-brain, antibody was diluted at 1:100



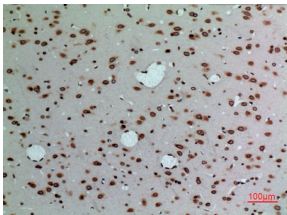
Immunohistochemical analysis of paraffin-embedded rat-brain, antibody was diluted at 1:100



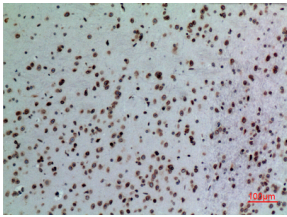
Immunohistochemical analysis of paraffin-embedded rat-brain, antibody was diluted at 1:100



Western Blot analysis of MCF7, SW480, PC-3, SKOV3, mouse spleen, mouse brain, mouse liver, mouse thymus cells using Lamin B1 Polyclonal Antibody. Antibody was diluted at 1:500. Secondary antibody was diluted at 1:20000 cells nucleus.



Immunohistochemical analysis of paraffin-embedded rat-brain, antibody was diluted at 1:100



Immunohistochemical analysis of paraffin-embedded mouse-brain, antibody was diluted at 1:100

## Storage

-20°C for one year

501 Changsheng S Rd, Nanhu Dist, Jiaxing, Zhejiang, China

Tel: 86 21 31007137 | E-mail: [save@bt-laboratory.com](mailto:save@bt-laboratory.com) | [www.bt-laboratory.com](http://www.bt-laboratory.com)