

## Laminin Alpha-1 Polyclonal Antibody

### Description

<b>Product type</b>	Primary Antibody
<b>Code</b>	BT-AP04937
<b>Host</b>	Rabbit
<b>Isotype</b>	IgG
<b>Size</b>	20ul, 50ul, 100ul
<b>Immunogen</b>	The antiserum was produced against synthesized peptide derived from human LAMA1. AA range:2501-2550
<b>Mol wt</b>	337158
<b>Species reactivity</b>	Human
<b>Clonality</b>	Polyclonal
<b>Recommended application</b>	IF, ELISA
<b>Concentration</b>	1 mg/ml
<b>Full name</b>	Laminin alpha-1 Antibody
<b>Synonyms</b>	LAMA1; LAMA; Laminin subunit alpha-1; Laminin A chain; Laminin-1 subunit alpha; Laminin-3 subunit alpha; S-laminin subunit alpha; S-LAM alpha

This product is for research use only, not for use in human, therapeutic or diagnostic procedure.

### Background

LAMA1 encodes one of the alpha 1 subunits of laminin. The laminins are a family of extracellular matrix glycoproteins that have a heterotrimeric structure consisting of an alpha, beta and gamma chain. These proteins make up a major component of the basement membrane and have been implicated in a wide variety of biological processes including cell adhesion, differentiation, migration, signaling, neurite outgrowth and metastasis. Mutations in this gene may be associated with Poretti-Boltshauser syndrome.

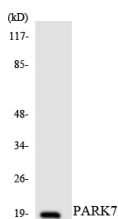
### Recommended Dilution

IF: 1: 200 - 1: 1000

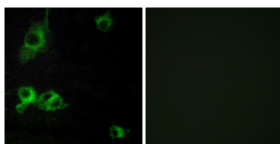
ELISA: 1: 40000

Not yet tested in other applications.

### Images



Western blot analysis of the lysates from HUVEC cells using PARK7 antibody.



Immunofluorescence analysis of COS7 cells, using LAMA1 Antibody. The picture on the right is blocked with the synthesized peptide.

### Storage

-20°C for one year

501 Changsheng S Rd, Nanhu Dist, Jiaxing, Zhejiang, China

Tel: 86 21 31007137 | E-mail: [save@bt-laboratory.com](mailto:save@bt-laboratory.com) | [www.bt-laboratory.com](http://www.bt-laboratory.com)