

Laminin Alpha-5 Polyclonal Antibody

Description

Product type	Primary Antibody
Code	BT-AP04941
Host	Rabbit
Isotype	IgG
Size	20ul, 50ul, 100ul
Immunogen	The antiserum was produced against synthesized peptide derived from human LAMA5. AA range:2381-2430
Mol wt	399755
Species reactivity	Human, Mouse
Clonality	Polyclonal
Recommended application	WB, IHC-p, ELISA
Concentration	1 mg/ml
Full name	Laminin alpha-5 Antibody
Synonyms	LAMA5; KIAA0533; KIAA1907; Laminin subunit alpha-5; Laminin-10 subunit alpha; Laminin-11 subunit alpha; Laminin-15 subunit alpha

This product is for research use only, not for use in human, therapeutic or diagnostic procedure.

Background

LAMA5 encodes one of the vertebrate laminin alpha chains. Laminins, a family of extracellular matrix glycoproteins, are the major noncollagenous constituent of basement membranes. They have been implicated in a wide variety of biological processes including cell adhesion, differentiation, migration, signaling, neurite outgrowth and metastasis. Laminins are composed of 3 non identical chains: laminin alpha, beta and gamma (formerly A, B1, and B2, respectively) and they form a cruciform structure consisting of 3 short arms, each formed by a different chain, and a long arm composed of all 3 chains. Each laminin chain is a multidomain protein encoded by a distinct gene. The protein encoded by this gene is the alpha-5 subunit of laminin-10 (laminin-511), laminin-11 (laminin-521) and laminin-15 (laminin-523).

Recommended Dilution

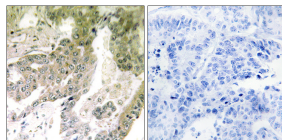
WB: 1: 500 - 1: 2000

IHC: 1: 100 - 1: 300

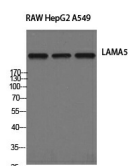
ELISA: 1: 20000

Not yet tested in other applications.

Images



Immunohistochemistry analysis of paraffin-embedded human lung carcinoma tissue, using LAMA5 Antibody. The picture on the right is blocked with the synthesized peptide.



Western Blot analysis of RAW HepG2 A549 cells using Laminin α -5 Polyclonal Antibody

Storage

-20°C for one year

501 Changsheng S Rd, Nanhu Dist, Jiaxing, Zhejiang, China

Tel: 86 21 31007137 | E-mail: save@bt-laboratory.com | www.bt-laboratory.com