

Laminin Beta-3 Polyclonal Antibody

Description

Product type	Primary Antibody
Code	BT-AP04944
Host	Rabbit
Isotype	IgG
Size	20ul, 50ul, 100ul
Immunogen	The antiserum was produced against synthesized peptide derived from human LAMB3. AA range:671-720
Mol wt	129572
Species reactivity	Human
Clonality	Polyclonal
Recommended application	IHC-p, IF, ELISA
Concentration	1 mg/ml
Full name	Laminin beta-3 Antibody
Synonyms	LAMB3; LAMNB1; Laminin subunit beta-3; Epiligrin subunit bata; Kalinin B1 chain; Kalinin subunit beta; Laminin B1k chain; Laminin-5 subunit beta; Nicein subunit beta

This product is for research use only, not for use in human, therapeutic or diagnostic procedure.

Background

The product encoded by LAMB3 is a laminin that belongs to a family of basement membrane proteins. This protein is a beta subunit laminin, which together with an alpha and a gamma subunit, forms laminin-5. Mutations in this gene cause epidermolysis bullosa junctional Herlitz type, and generalized atrophic benign epidermolysis bullosa, diseases that are characterized by blistering of the skin. Multiple alternatively spliced transcript variants that encode the same protein have been found for this gene.

Recommended Dilution

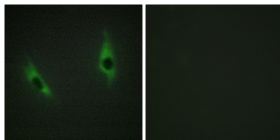
IHC: 1: 100 - 1: 300

IF: 1: 200 - 1: 1000

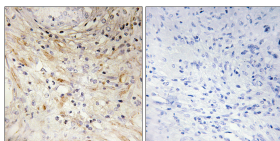
ELISA: 1: 5000

Not yet tested in other applications.

Images



Immunofluorescence analysis of HeLa cells, using LAMB3 Antibody. The picture on the right is blocked with the synthesized peptide.



Immunohistochemistry analysis of paraffin-embedded human prostate carcinoma tissue, using LAMB3 Antibody. The picture on the right is blocked with the synthesized peptide.

Storage

-20°C for one year