

LAP1B Polyclonal Antibody

Description

Product type	Primary Antibody
Code	BT-AP04949
Host	Rabbit
Isotype	IgG
Size	20ul, 50ul, 100ul
Immunogen	The antiserum was produced against synthesized peptide derived from human TOR1AIP1. AA range:431-480
Mol wt	66248
Species reactivity	Human
Clonality	Polyclonal
Recommended application	WB, ELISA
Concentration	1 mg/ml
Full name	LAP1B Antibody
Synonyms	TOR1AIP1; Torsin-1A-interacting protein 1; Lamin-associated protein 1B; LAP1B

This product is for research use only, not for use in human, therapeutic or diagnostic procedure.

Background

TOR1AIP1 encodes a type 2 integral membrane protein that binds A- and B-type lamins. Torsin-1A-interacting protein 1 localizes to the inner nuclear membrane and may be involved in maintaining the attachment of the nuclear membrane to the nuclear lamina during cell division.

Alternate splicing results in multiple transcript variants.

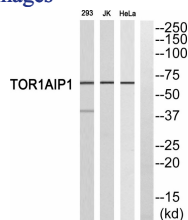
Recommended Dilution

WB: 1: 500 - 1: 2000

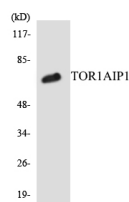
ELISA: 1: 10000

Not yet tested in other applications.

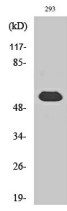
Images



Western blot analysis of TOR1AIP1 Antibody. The lane on the right is blocked with the TOR1AIP1 peptide.



Western blot analysis of the lysates from COLO205 cells using TOR1AIP1 antibody.



Western Blot analysis of various cells using LAP1B Polyclonal Antibody cells nucleus.

Storage

-20°C for one year

501 Changsheng S Rd, Nanhu Dist, Jiaxing, Zhejiang, China

Tel: 86 21 31007137 | E-mail: save@bt-laboratory.com | www.bt-laboratory.com