

## LASP-1 Polyclonal Antibody

### Description

<b>Product type</b>	Primary Antibody
<b>Code</b>	BT-AP04955
<b>Host</b>	Rabbit
<b>Isotype</b>	IgG
<b>Size</b>	20ul, 50ul, 100ul
<b>Immunogen</b>	The antiserum was produced against synthesized peptide derived from the Internal region of human LASP1. AA range:51-100
<b>Mol wt</b>	29717
<b>Species reactivity</b>	Human, Mouse, Rat
<b>Clonality</b>	Polyclonal
<b>Recommended application</b>	WB, ELISA
<b>Concentration</b>	1 mg/ml
<b>Full name</b>	LASP-1 Antibody
<b>Synonyms</b>	LASP1; MLN50; LIM and SH3 domain protein 1; LASP-1; Metastatic lymph node gene 50 protein; MLN50

This product is for research use only, not for use in human, therapeutic or diagnostic procedure.

### Background

LASP1 encodes a member of a subfamily of LIM proteins, characterized by a LIM motif and a domain of Src homology region 3, and also a member of the nebulin family of actin-binding proteins. The LIM and SH3 protein 1 is a cAMP and cGMP dependent signaling protein and binds to the actin cytoskeleton at extensions of the cell membrane. The encoded protein has been linked to metastatic breast cancer, hematopoietic tumors such as B-cell lymphomas, and colorectal cancer.

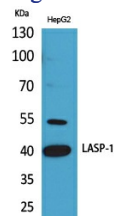
### Recommended Dilution

WB: 1: 500 - 1: 2000

ELISA: 1: 20000

Not yet tested in other applications.

### Images



Western Blot analysis of HepG2 cells using LASP-1 Polyclonal Antibody. Antibody was diluted at 1:500. Secondary antibody was diluted at 1:20000

### Storage

-20°C for one year