

Latherin Polyclonal Antibody

Description

Product type	Primary Antibody
Code	BT-AP04963
Host	Rabbit
Isotype	IgG
Size	20ul, 50ul, 100ul
Immunogen	The antiserum was produced against synthesized peptide derived from human LATH. AA range:71-120
Mol wt	19456
Species reactivity	Human
Clonality	Polyclonal
Recommended application	IHC-p, IF, ELISA
Concentration	1 mg/ml
Full name	Latherin Antibody
Synonyms	LATH; BASE; Putative latherin; Breast cancer and salivary gland-expressed protein

This product is for research use only, not for use in human, therapeutic or diagnostic procedure.

Background

LATH, also named as BASE, belongs to the BPI/LBP/Plunc superfamily and Plunc family. It is the major protein in sweat, has surfactant properties.

Recommended Dilution

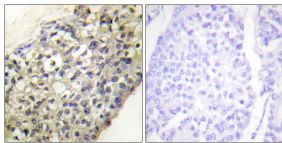
IHC: 1: 100 - 1: 300

IF: 1: 200 - 1: 1000

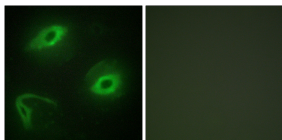
ELISA: 1: 20000

Not yet tested in other applications.

Images



Immunohistochemistry analysis of paraffin-embedded human breast carcinoma tissue, using LATH Antibody. The picture on the right is blocked with the synthesized peptide.



Immunofluorescence analysis of HeLa cells, using LATH Antibody. The picture on the right is blocked with the synthesized peptide.

Storage

-20°C for one year