

Latrophilin-1 Polyclonal Antibody

Description

Product type	Primary Antibody
Code	BT-AP04964
Host	Rabbit
Isotype	IgG
Size	20ul, 50ul, 100ul
Immunogen	The antiserum was produced against synthesized peptide derived from human LPHN1. AA range:561-610
Mol wt	162717
Species reactivity	Human, Mouse, Rat
Clonality	Polyclonal
Recommended application	IF, ELISA
Concentration	1 mg/ml
Full name	Latrophilin-1 Antibody
Synonyms	LPHN1; KIAA0821; LEC2; Latrophilin-1; Calcium-independent alpha-latrotoxin receptor 1; CIRL-1; Lectomedin-2

This product is for research use only, not for use in human, therapeutic or diagnostic procedure.

Background

ADGRL1 encodes a member of the latrophilin subfamily of G-protein coupled receptors (GPCR). Latrophilins may function in both cell adhesion and signal transduction. In experiments with non-human species, endogenous proteolytic cleavage within a cysteine-rich GPS (G-protein-coupled-receptor proteolysis site) domain resulted in two subunits (a large extracellular N-terminal cell adhesion subunit and a subunit with substantial similarity to the secretin/calcitonin family of GPCRs) being non-covalently bound at the cell membrane. Latrophilin-1 has been shown to recruit the neurotoxin from black widow spider venom, alpha-latrotoxin, to the synapse plasma membrane. Alternative splicing results in multiple variants encoding distinct isoforms.

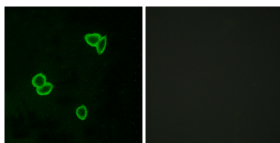
Recommended Dilution

IF: 1: 200 - 1: 1000

ELISA: 1: 5000

Not yet tested in other applications.

Images



Immunofluorescence analysis of LOVO cells, using LPHN1 Antibody. The picture on the right is blocked with the synthesized peptide.

Storage

-20°C for one year