

Latrophilin-2 Polyclonal Antibody

Description

Product type	Primary Antibody
Code	BT-AP04965
Host	Rabbit
Isotype	IgG
Size	20ul, 50ul, 100ul
Immunogen	The antiserum was produced against synthesized peptide derived from human LPHN2. AA range:551-600
Mol wt	163349
Species reactivity	Human, Mouse, Rat
Clonality	Polyclonal
Recommended application	IHC-p, IF, ELISA
Concentration	1 mg/ml
Full name	Latrophilin-2 Antibody
Synonyms	LPHN2; KIAA0786; LEC1; LPHH1; Latrophilin-2; Calcium-independent alpha-latrotoxin receptor 2; CIRC-2; Latrophilin homolog 1; Lectomedin-1

This product is for research use only, not for use in human, therapeutic or diagnostic procedure.

Background

ADGRL2 encodes a member of the latrophilin subfamily of G-protein coupled receptors. The adhesion G protein-coupled receptor L2 participates in the regulation of exocytosis. The proprotein is thought to be further cleaved within a cysteine-rich G-protein-coupled receptor proteolysis site into two chains that are non-covalently bound at the cell membrane. Alternative splicing results in multiple transcript variants.

Recommended Dilution

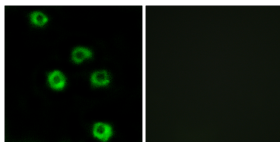
IHC: 1: 100 - 1: 300

IF: 1: 200 - 1: 1000

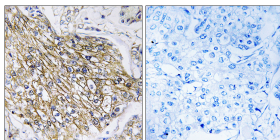
ELISA: 1: 5000

Not yet tested in other applications.

Images



Immunofluorescence analysis of COS7 cells, using LPHN2 Antibody. The picture on the right is blocked with the synthesized peptide.



Immunohistochemistry analysis of paraffin-embedded human breast carcinoma tissue, using LPHN2 Antibody. The picture on the right is blocked with the synthesized peptide.

Storage

-20°C for one year