

## SYNJ2 Rabbit Polyclonal Antibody

### Description

Product type	Primary Antibody
Code	BT-AP04984
Host	Rabbit
Isotype	IgG
Size	20ul, 50ul, 100ul
Immunogen	Synthesized peptide derived from human SYNJ2
Mol wt	164560
Species reactivity	Human, Mouse, Rat
Clonality	Polyclonal
Recommended application	WB
Concentration	1 mg/ml
Full name	SYNJ2
Synonyms	SYNJ2

This product is for research use only, not for use in human, therapeutic or diagnostic procedure.

### Background

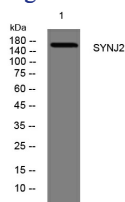
The gene is a member of the inositol-polyphosphate 5-phosphatase family. The encoded protein interacts with the ras-related C3 botulinum toxin substrate 1| which causes translocation of the encoded protein to the plasma membrane where it inhibits clathrin-mediated endocytosis. Alternative splicing results in multiple transcript variants.

### Recommended Dilution

WB: 1: 500 - 1: 2000

Not yet tested in other applications.

### Images



Western blot analysis of lysates from 293T cells, primary antibody was diluted at 1:1000, 4°C overnight

### Storage

-20°C for 1 year

501 Changsheng S Rd, Nanhu Dist, Jiaxing, Zhejiang, China

Tel: 86 21 31007137 | E-mail: [save@bt-laboratory.com](mailto:save@bt-laboratory.com) | [www.bt-laboratory.com](http://www.bt-laboratory.com)