

## LDLRAD1 Polyclonal Antibody

### Description

<b>Product type</b>	Primary Antibody
<b>Code</b>	BT-AP04987
<b>Host</b>	Rabbit
<b>Isotype</b>	IgG
<b>Size</b>	20ul, 50ul, 100ul
<b>Immunogen</b>	The antiserum was produced against synthesized peptide derived from human LDLRAD1. AA range:84-133
<b>Mol wt</b>	21834
<b>Species reactivity</b>	Human
<b>Clonality</b>	Polyclonal
<b>Recommended application</b>	WB, ELISA
<b>Concentration</b>	1 mg/ml
<b>Full name</b>	LDLRAD1 Antibody
<b>Synonyms</b>	LDLRAD1; Low-density lipoprotein receptor class A domain-containing protein 1

This product is for research use only, not for use in human, therapeutic or diagnostic procedure.

### Background

LDLRAD1 is a gene on chromosome 1p32. Low-density lipoprotein receptor class A domain-containing protein 1 encoded by LDLRAD1 is a low-density lipoprotein receptor.

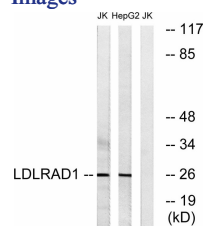
### Recommended Dilution

WB: 1: 500 - 1: 2000

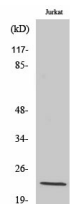
ELISA: 1: 10000

Not yet tested in other applications.

### Images



Western blot analysis of lysates from Jurkat and HepG2 cells, using LDLRAD1 Antibody. The lane on the right is blocked with the synthesized peptide.



Western Blot analysis of various cells using LDLRAD1 Polyclonal Antibody

### Storage

-20°C for one year

