

LDLRAD3 Polyclonal Antibody

Description

Product type	Primary Antibody
Code	BT-AP04989
Host	Rabbit
Isotype	IgG
Size	20ul, 50ul, 100ul
Immunogen	The antiserum was produced against synthesized peptide derived from human LDLRAD3. AA range:37-86
Mol wt	37406
Species reactivity	Human, Mouse
Clonality	Polyclonal
Recommended application	IF, ELISA
Concentration	1 mg/ml
Full name	LDLRAD3 Antibody
Synonyms	LDLRAD3; Low-density lipoprotein receptor class A domain-containing protein 3

This product is for research use only, not for use in human, therapeutic or diagnostic procedure.

Background

LDLRAD3 (Low Density Lipoprotein Receptor Class A Domain Containing 3) is a Protein Coding gene. GO annotations related to this gene include beta-amyloid binding. An important paralog of this gene is LRP3. ay influence APP processing, resulting in a decrease in sAPP-alpha production and increased amyloidogenic P3 peptide production.

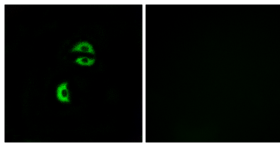
Recommended Dilution

IF: 1: 200 - 1: 1000

ELISA: 1: 40000

Not yet tested in other applications.

Images



Immunofluorescence analysis of A549 cells, using LDLRAD3 Antibody. The picture on the right is blocked with the synthesized peptide.

Storage

-20°C for one year

501 Changsheng S Rd, Nanhu Dist, Jiaxing, Zhejiang, China

Tel: 86 21 31007137 | E-mail: save@bt-laboratory.com | www.bt-laboratory.com