

## LDOC1L Polyclonal Antibody

### Description

Product type	Primary Antibody
Code	BT-AP04991
Host	Rabbit
Isotype	IgG
Size	20ul, 50ul, 100ul
Immunogen	The antiserum was produced against synthesized peptide derived from human LDOC1L. AA range:141-190
Mol wt	26154
Species reactivity	Human, Mouse
Clonality	Polyclonal
Recommended application	WB, IHC-p, ELISA
Concentration	1 mg/ml
Full name	LDOC1L Antibody
Synonyms	LDOC1L; MAR6; MART6; Protein LDOC1L; Leucine zipper protein down-regulated in cancer cells-like; Mammalian retrotransposon-derived protein 6

This product is for research use only, not for use in human, therapeutic or diagnostic procedure.

### Background

The gene encoding leucine zipper protein down-regulated in cancer cells-like 1 (LDOC1L) is present on chromosome Xq27. LDOC1L is a 17kDa protein that possesses a leucine zipper-like motif at the N-terminal region and a short proline-rich region containing SH3-binding consensus sequence.

### Recommended Dilution

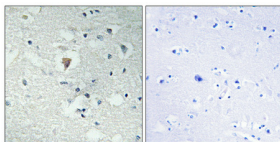
WB: 1: 500 - 1: 2000

IHC: 1: 100 - 1: 300

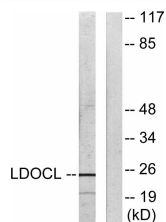
ELISA: 1: 20000

Not yet tested in other applications.

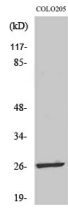
### Images



Immunohistochemical analysis of paraffin-embedded Human brain. Antibody was diluted at 1:100(4° overnight). High-pressure and temperature Tris-EDTA,pH8.0 was used for antigen retrieval. Negative contrl (right) obtained from antibody was pre-absorbed by immunogen peptide.



Western blot analysis of lysates from COLO205 cells, using LDOC1L Antibody. The lane on the right is blocked with the synthesized peptide.



## Western Blot analysis of various cells using LDOC1L Polyclonal Antibody

### Storage

-20°C for one year

501 Changsheng S Rd, Nanhu Dist, Jiaxing, Zhejiang, China

Tel: 86 21 31007137 | E-mail: [save@bt-laboratory.com](mailto:save@bt-laboratory.com) | [www.bt-laboratory.com](http://www.bt-laboratory.com)