

## Lefty Polyclonal Antibody

### Description

<b>Product type</b>	Primary Antibody
<b>Code</b>	BT-AP04994
<b>Host</b>	Rabbit
<b>Isotype</b>	IgG
<b>Size</b>	20ul, 50ul, 100ul
<b>Immunogen</b>	The antiserum was produced against synthesized peptide derived from the C-terminal region of human LEFTY1/LEFTY2. AA range:301-350
<b>Mol wt</b>	40880/40920
<b>Species reactivity</b>	Human, Mouse
<b>Clonality</b>	Polyclonal
<b>Recommended application</b>	WB, ELISA
<b>Concentration</b>	1 mg/ml
<b>Full name</b>	Lefty Antibody
<b>Synonyms</b>	LEFTY1; LEFTB; LEFTYB; Left-right determination factor 1; Left-right determination factor B; Protein lefty-1; Protein lefty-B; LEFTY2; EBAF; LEFTA; LEFTYA; TGFB4; PSEC0024; Left-right determination fa

**This product is for research use only, not for use in human, therapeutic or diagnostic procedure.**

### Background

LEFTY1 encodes a member of the TGF-beta family of proteins. A similar secreted protein in mouse plays a role in left-right asymmetry determination of organ systems during development. Alternative processing of this protein can yield three different products. LEFTY1 is closely linked to both a related family member and a related pseudogene.

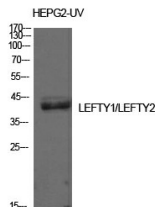
### Recommended Dilution

WB: 1: 500 - 1: 2000

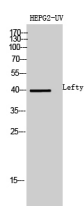
ELISA: 1: 10000

Not yet tested in other applications.

### Images



Western Blot analysis of HepG2-UV cells using Lefty Polyclonal Antibody. Antibody was diluted at 1:500. Secondary antibody was diluted at 1:20000



Western Blot analysis of HepG2-UV cells using Lefty Polyclonal Antibody diluted at 1:500. Secondary antibody was diluted at 1:20000

## Storage

-20°C for one year

501 Changsheng S Rd, Nanhu Dist, Jiaxing, Zhejiang, China

Tel: 86 21 31007137 | E-mail: [save@bt-laboratory.com](mailto:save@bt-laboratory.com) | [www.bt-laboratory.com](http://www.bt-laboratory.com)