

LHX1 Polyclonal Antibody

Description

Product type	Primary Antibody
Code	BT-AP05005
Host	Rabbit
Isotype	IgG
Size	20ul, 50ul, 100ul
Immunogen	Synthesized peptide derived from the Internal region of human LHX1.
Mol wt	44808
Species reactivity	Human, Mouse, Rat
Clonality	Polyclonal
Recommended application	WB, IHC-p, ELISA
Concentration	1 mg/ml
Full name	LHX1 Antibody
Synonyms	LHX1; LIM-1; LIM1; LIM/homeobox protein Lhx1; LIM homeobox protein 1; Homeobox protein Lim-1; hLim-1

This product is for research use only, not for use in human, therapeutic or diagnostic procedure.

Background

LHX1 encodes a member of a large protein family which contains the LIM domain, a unique cysteine-rich zinc-binding domain. The encoded protein is a transcription factor important for the development of the renal and urogenital systems. This gene is a candidate for Mayer-Rokitansky-Kuster-Hauser syndrome, a disorder characterized by anomalies in the female genital tract.

Recommended Dilution

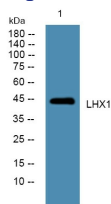
WB: 1: 500 - 1: 2000

IHC: 1: 100 - 1: 300

ELISA: 1: 40000

Not yet tested in other applications.

Images



Western blot analysis of lysates from SH-SY5Y cells, primary antibody was diluted at 1:1000, 4° over night

Storage

-20°C for one year