

## LIMK-2 Polyclonal Antibody

### Description

Product type	Primary Antibody
Code	BT-AP05021
Host	Rabbit
Isotype	IgG
Size	20ul, 50ul, 100ul
Immunogen	Synthesized peptide derived from LIMK-2 . at AA range: 440-520
Mol wt	72232
Species reactivity	Human, Mouse, Rat
Clonality	Polyclonal
Recommended application	WB, ELISA
Concentration	1 mg/ml
Full name	LIMK-2 Antibody
Synonyms	LIMK2; LIM domain kinase 2; LIMK-2

This product is for research use only, not for use in human, therapeutic or diagnostic procedure.

### Background

There are approximately 40 known eukaryotic LIM proteins, so named for the LIM domains they contain. LIM domains are highly conserved cysteine-rich structures containing 2 zinc fingers. Although zinc fingers usually function by binding to DNA or RNA, the LIM motif probably mediates protein-protein interactions. LIM kinase-1 and LIM kinase-2 belong to a small subfamily with a unique combination of 2 N-terminal LIM motifs and a C-terminal protein kinase domain. The protein encoded by LIMK2 is phosphorylated and activated by ROCK, a downstream effector of Rho, and the encoded protein, in turn, phosphorylates cofilin, inhibiting its actin-depolymerizing activity. It is thought that this pathway contributes to Rho-induced reorganization of the actin cytoskeleton. At least three transcript variants encoding different isoforms have been found for this gene.

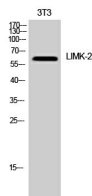
### Recommended Dilution

WB: 1: 500 - 1: 2000

ELISA: 1: 20000

Not yet tested in other applications.

### Images



Western Blot analysis of K562 cells using LIMK-2 Polyclonal Antibody

### Storage

-20°C for one year