

TAPT1 Rabbit Polyclonal Antibody

Description

Product type	Primary Antibody
Code	BT-AP05023
Host	Rabbit
Isotype	IgG
Size	20ul, 50ul, 100ul
Immunogen	Synthesized peptide derived from human TAPT1
Mol wt	N/A
Species reactivity	Human, Mouse
Clonality	Polyclonal
Recommended application	WB
Concentration	1 mg/ml
Full name	TAPT1
Synonyms	TAPT1; Transmembrane anterior posterior transformation protein 1 homolog; Cytomegalovirus partial fusion receptor

This product is for research use only, not for use in human, therapeutic or diagnostic procedure.

Background

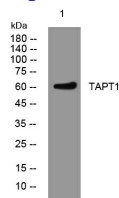
This gene encodes a highly conserved putative transmembrane protein. A mutation in the mouse ortholog of this gene results in homeotic posterior-to-anterior transformations of the axial skeleton which are similar to the phenotype of mouse homeobox C8 gene mutants. This gene is proposed to function downstream of homeobox C8 to transduce extracellular patterning information during axial skeleton development. An alternatively spliced transcript variant encoding a substantially different isoform has been described but its biological validity has not been determined.

Recommended Dilution

WB: 1: 500 - 1: 2000

Not yet tested in other applications.

Images



Western blot analysis of lysates from MCF-7 cells, primary antibody was diluted at 1:1000, 4°C overnight

Storage

-20°C for 1 year