

Liprin Beta1 Polyclonal Antibody

Description

Product type	Primary Antibody
Code	BT-AP05028
Host	Rabbit
Isotype	IgG
Size	20ul, 50ul, 100ul
Immunogen	The antiserum was produced against synthesized peptide derived from human LIPB1. AA range:300-349
Mol wt	114024
Species reactivity	Human, Mouse
Clonality	Polyclonal
Recommended application	WB, ELISA
Concentration	1 mg/ml
Full name	Liprin beta1 Antibody
Synonyms	PPFIBP1; KIAA1230; Liprin-beta-1; Protein tyrosine phosphatase receptor type f polypeptide-interacting protein-binding protein 1; PTPRF-interacting protein-binding protein 1; hSGT2

This product is for research use only, not for use in human, therapeutic or diagnostic procedure.

Background

Liprin-beta-1 encoded by PPFIBP1 is a member of the LAR protein-tyrosine phosphatase-interacting protein (liprin) family. Liprins interact with members of LAR family of transmembrane protein tyrosine phosphatases, which are known to be important for axon guidance and mammary gland development. It has been proposed that liprins are multivalent proteins that form complex structures and act as scaffolds for the recruitment and anchoring of LAR family of tyrosine phosphatases. This protein was found to interact with S100A4, a calcium-binding protein related to tumor invasiveness and metastasis. In vitro experiment demonstrated that the interaction inhibited the phosphorylation of this protein by protein kinase C and protein kinase CK2. Alternatively spliced transcript variants encoding distinct isoforms have been reported.

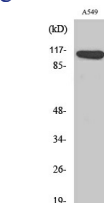
Recommended Dilution

WB: 1: 500 - 1: 2000

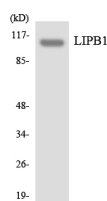
ELISA: 1: 20000

Not yet tested in other applications.

Images



Western Blot analysis of various cells using Liprin beta1 Polyclonal Antibody diluted at 1:2000



Western blot analysis of the lysates from COLO205 cells using LIPB1 antibody.

Storage

-20°C for one year

501 Changsheng S Rd, Nanhu Dist, Jiaxing, Zhejiang, China

Tel: 86 21 31007137 | E-mail: save@bt-laboratory.com | www.bt-laboratory.com