

LIR-1 Polyclonal Antibody

Description

Product type	Primary Antibody
Code	BT-AP05029
Host	Rabbit
Isotype	IgG
Size	20ul, 50ul, 100ul
Immunogen	The antiserum was produced against synthesized peptide derived from the N-terminal region of human LILRB1. AA range:21-70
Mol wt	70819
Species reactivity	Human
Clonality	Polyclonal
Recommended application	WB, ELISA
Concentration	1 mg/ml
Full name	LIR-1 Antibody
Synonyms	LILRB1; ILT2; LIR1; MIR7; Leukocyte immunoglobulin-like receptor subfamily B member 1; LIR-1; Leukocyte immunoglobulin-like receptor 1; CD85 antigen-like family member J; Immunoglobulin-like transcrip

This product is for research use only, not for use in human, therapeutic or diagnostic procedure.

Background

LILRB1 is a member of the leukocyte immunoglobulin-like receptor (LIR) family, which is found in a gene cluster at chromosomal region 19q13. The leukocyte immunoglobulin like receptor B1 belongs to the subfamily B class of LIR receptors which contain two or four extracellular immunoglobulin domains, a transmembrane domain, and two to four cytoplasmic immunoreceptor tyrosine-based inhibitory motifs (ITIMs). The receptor is expressed on immune cells where it binds to MHC class I molecules on antigen-presenting cells and transduces a negative signal that inhibits stimulation of an immune response. It is thought to control inflammatory responses and cytotoxicity to help focus the immune response and limit autoreactivity. Multiple transcript variants encoding different isoforms have been found for this gene.

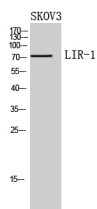
Recommended Dilution

WB: 1: 500 - 1: 2000

ELISA: 1: 10000

Not yet tested in other applications.

Images



Western Blot analysis of SKOV3 cells using LIR-1 Polyclonal Antibody. Secondary antibody was diluted at 1:20000

Storage

-20°C for one year

501 Changsheng S Rd, Nanhu Dist, Jiaxing, Zhejiang, China

Tel: 86 21 31007137 | E-mail: save@bt-laboratory.com | www.bt-laboratory.com