

TBC1D15 Rabbit Polyclonal Antibody

Description

Product type	Primary Antibody
Code	BT-AP05036
Host	Rabbit
Isotype	IgG
Size	20ul, 50ul, 100ul
Immunogen	Synthesized peptide derived from human TBC1D15
Mol wt	N/A
Species reactivity	Human, Mouse
Clonality	Polyclonal
Recommended application	WB
Concentration	1 mg/ml
Full name	TBC1D15
Synonyms	TBC1D15; TBC1 domain family member 15; GTPase-activating protein RAB7; GAP for RAB7; Rab7-GAP

This product is for research use only, not for use in human, therapeutic or diagnostic procedure.

Background

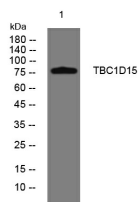
This gene encodes a member of the Ras-like proteins in brain-GTPase activating protein superfamily that share a conserved Tre-2/Bub2/Cdc16 domain. The encoded protein interacts with Ras-like protein in brain 5A and may function as a regulator of intracellular trafficking. Alternate splicing results in multiple transcript variants.

Recommended Dilution

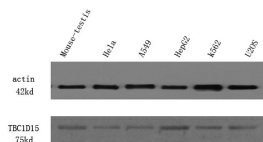
WB: 1: 500 - 1: 2000

Not yet tested in other applications.

Images



Western blot analysis of lysates from K562 cells, primary antibody was diluted at 1:1000, 4°C overnight



Western Blot analysis of HeLa cell lysis, treated by EGF. Primary Antibody was diluted at 1:1000. Secondary antibody was diluted at 1:10000

Storage

-20°C for 1 year