

## LKB1 Polyclonal Antibody

### Description

<b>Product type</b>	Primary Antibody
<b>Code</b>	BT-AP05040
<b>Host</b>	Rabbit
<b>Isotype</b>	IgG
<b>Size</b>	20ul, 50ul, 100ul
<b>Immunogen</b>	The antiserum was produced against synthesized peptide derived from human LKB1. AA range:300-349
<b>Mol wt</b>	48636
<b>Species reactivity</b>	Human, Mouse
<b>Clonality</b>	Polyclonal
<b>Recommended application</b>	WB, ELISA
<b>Concentration</b>	1 mg/ml
<b>Full name</b>	LKB1 Antibody
<b>Synonyms</b>	STK11; LKB1; PJS; Serine/threonine-protein kinase STK11; Liver kinase B1; LKB1; hLKB1; Renal carcinoma antigen NY-REN-19

**This product is for research use only, not for use in human, therapeutic or diagnostic procedure.**

### Background

STK11 (serine/threonine kinase 11), which encodes a member of the serine/threonine kinase family, regulates cell polarity and functions as a tumor suppressor. Mutations in STK11 have been associated with Peutz-Jeghers syndrome, an autosomal dominant disorder characterized by the growth of polyps in the gastrointestinal tract, pigmented macules on the skin and mouth, and other neoplasms. Alternate transcriptional splice variants of STK11 have been observed but have not been thoroughly characterized.

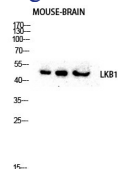
### Recommended Dilution

WB: 1: 500 - 1: 2000

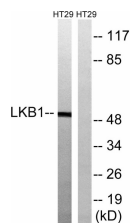
ELISA: 1: 20000

Not yet tested in other applications.

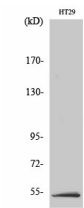
### Images



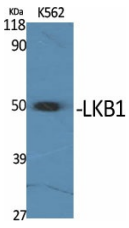
Western blot analysis of KB 3T3 Hela lysis using LKB1 antibody. Antibody was diluted at 1:500



Western blot analysis of lysates from HT-29 cells, using LKB1 Antibody. The lane on the right is blocked with the synthesized peptide.



Western Blot analysis of HT29 cells using LKB1 Polyclonal Antibody diluted at 1:500



Western Blot analysis of various cells using LKB1 Polyclonal Antibody diluted at 1:500

### Storage

-20°C for one year

501 Changsheng S Rd, Nanhu Dist, Jiaxing, Zhejiang, China

Tel: 86 21 31007137 | E-mail: [save@bt-laboratory.com](mailto:save@bt-laboratory.com) | [www.bt-laboratory.com](http://www.bt-laboratory.com)