

LMO3 Polyclonal Antibody

Description

Product type	Primary Antibody
Code	BT-AP05041
Host	Rabbit
Isotype	IgG
Size	20ul, 50ul, 100ul
Immunogen	The antiserum was produced against synthesized peptide derived from human LMO3. AA range:96-145
Mol wt	16594
Species reactivity	Human, Mouse, Rat, Monkey
Clonality	Polyclonal
Recommended application	WB, IHC-p, ELISA
Concentration	1 mg/ml
Full name	LMO3 Antibody
Synonyms	LMO3; RBTN3; RBTNL2; RHOM3; LIM domain only protein 3; LMO-3; Neuronal-specific transcription factor DAT1; Rhombotin-3

This product is for research use only, not for use in human, therapeutic or diagnostic procedure.

Background

LIM domain only protein 3 encoded by LMO3 belongs to the rhombotin family of cysteine-rich LIM domain oncogenes. LMO3 is predominantly expressed in the brain. Related family members, LMO1 and LMO2 on chromosome 11, have been reported to be involved in chromosomal translocations in T-cell leukemia. Many alternatively spliced transcript variants have been found for this gene.

Recommended Dilution

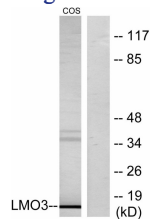
WB: 1: 500 - 1: 2000

IHC: 1: 100 - 1: 300

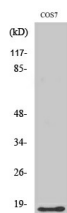
ELISA: 1: 10000

Not yet tested in other applications.

Images



Western blot analysis of lysates from COS7 cells, using LMO3 Antibody. The lane on the right is blocked with the synthesized peptide.



Western Blot analysis of various cells using LMO3 Polyclonal Antibody

Storage

-20°C for one year

501 Changsheng S Rd, Nanhu Dist, Jiaxing, Zhejiang, China

Tel: 86 21 31007137 | E-mail: save@bt-laboratory.com | www.bt-laboratory.com