

LMX1B Polyclonal Antibody

Description

| | |
|-------------------------|--|
| Product type | Primary Antibody |
| Code | BT-AP05046 |
| Host | Rabbit |
| Isotype | IgG |
| Size | 20ul, 50ul, 100ul |
| Immunogen | The antiserum was produced against synthesized peptide derived from human LMX1B. AA range:126-175 |
| Mol wt | 42409 |
| Species reactivity | Human, Mouse |
| Clonality | Polyclonal |
| Recommended application | WB, IHC-p, ELISA |
| Concentration | 1 mg/ml |
| Full name | LMX1B Antibody |
| Synonyms | LMX1B; LIM homeobox transcription factor 1-beta; LIM/homeobox protein 1.2; LMX-1.2; LIM/homeobox protein LMX1B |

This product is for research use only, not for use in human, therapeutic or diagnostic procedure.

Background

LMX1B encodes a member of LIM-homeodomain family of proteins containing two N-terminal zinc-binding LIM domains, 1 homeodomain, and a C-terminal glutamine-rich domain. It functions as a transcription factor, and is essential for the normal development of dorsal limb structures, the glomerular basement membrane, the anterior segment of the eye, and dopaminergic and serotonergic neurons. Mutations in this gene are associated with nail-patella syndrome. Alternatively spliced transcript variants encoding different isoforms have been found for this gene.

Recommended Dilution

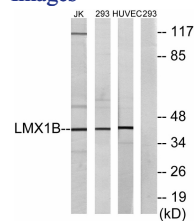
WB: 1: 500 - 1: 2000

IHC: 1: 100 - 1: 300

ELISA: 1: 40000

Not yet tested in other applications.

Images



Western blot analysis of lysates from Jurkat, 293, and HUVEC cells, using LMX1B Antibody. The lane on the right is blocked with the synthesized peptide.

Storage

-20°C for one year