

## LOK Polyclonal Antibody

### Description

<b>Product type</b>	Primary Antibody
<b>Code</b>	BT-AP05048
<b>Host</b>	Rabbit
<b>Isotype</b>	IgG
<b>Size</b>	20ul, 50ul, 100ul
<b>Immunogen</b>	The antiserum was produced against synthesized peptide derived from human STK10. AA range:491-540
<b>Mol wt</b>	112135
<b>Species reactivity</b>	Human
<b>Clonality</b>	Polyclonal
<b>Recommended application</b>	WB, ELISA
<b>Concentration</b>	1 mg/ml
<b>Full name</b>	LOK Antibody
<b>Synonyms</b>	STK10; LOK; Serine/threonine-protein kinase 10; Lymphocyte-oriented kinase

**This product is for research use only, not for use in human, therapeutic or diagnostic procedure.**

### Background

STK10 encodes a member of the Ste20 family of serine/threonine protein kinases, and is similar to several known polo-like kinase kinases. Serine/threonine-protein kinase 10 can associate with and phosphorylate polo-like kinase 1, and overexpression of a kinase-dead version of the protein interferes with normal cell cycle progression. Serine/threonine-protein kinase 10 can also negatively regulate interleukin 2 expression in T-cells via the mitogen activated protein kinase kinase 1 pathway.

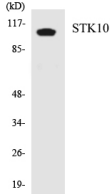
### Recommended Dilution

WB: 1: 500 - 1: 2000

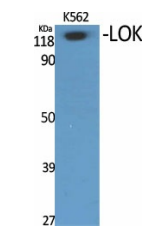
ELISA: 1: 20000

Not yet tested in other applications.

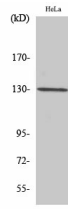
### Images



Western blot analysis of the lysates from HT-29 cells using STK10 antibody.



Western Blot analysis of various cells using LOK Polyclonal Antibody



## Western Blot analysis of HuvEc cells using LOK Polyclonal Antibody

### Storage

-20°C for one year

501 Changsheng S Rd, Nanhu Dist, Jiaxing, Zhejiang, China

Tel: 86 21 31007137 | E-mail: [save@bt-laboratory.com](mailto:save@bt-laboratory.com) | [www.bt-laboratory.com](http://www.bt-laboratory.com)