

LONP2 Polyclonal Antibody

Description

Product type	Primary Antibody
Code	BT-AP05049
Host	Rabbit
Isotype	IgG
Size	20ul, 50ul, 100ul
Immunogen	The antiserum was produced against synthesized peptide derived from human LONP2. AA range:780-829
Mol wt	94617
Species reactivity	Human, Mouse, Rat
Clonality	Polyclonal
Recommended application	WB, IHC-p, ELISA
Concentration	1 mg/ml
Full name	LONP2 Antibody
Synonyms	LONP2; LONP; Lon protease homolog 2; peroxisomal; Lon protease-like protein 2; Lon protease 2; Peroxisomal Lon protease

This product is for research use only, not for use in human, therapeutic or diagnostic procedure.

Background

LONP2 (Lon Peptidase 2, Peroxisomal) is a Protein Coding gene. Among its related pathways are Chaperonin-mediated protein folding and Transport to the Golgi and subsequent modification. GO annotations related to this gene include receptor binding and ATPase activity. An important paralog of this gene is LONP1.

Recommended Dilution

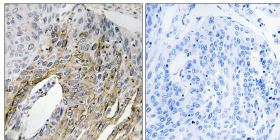
WB: 1: 500 - 1: 2000

IHC: 1: 100 - 1: 300

ELISA: 1: 40000

Not yet tested in other applications.

Images



Immunohistochemistry analysis of paraffin-embedded human lung carcinoma tissue, using LONP2 Antibody. The picture on the right is blocked with the synthesized peptide.

Storage

-20°C for one year