

TCPR2 Rabbit Polyclonal Antibody

Description

Product type	Primary Antibody
Code	BT-AP05059
Host	Rabbit
Isotype	IgG
Size	20ul, 50ul, 100ul
Immunogen	Synthesized peptide derived from human TCPR2
Mol wt	155210
Species reactivity	Human, Rat, Mouse
Clonality	Polyclonal
Recommended application	WB
Concentration	1 mg/ml
Full name	TCPR2
Synonyms	TCPR2

This product is for research use only, not for use in human, therapeutic or diagnostic procedure.

Background

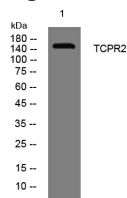
The protein encoded by this gene is a member of the tectonin beta-propeller repeat-containing (TECPR) family and contains both TECPR and tryptophan-aspartic acid repeat (WD repeat) domains. This gene has been implicated in autophagy as reduced expression levels of this gene have been associated with impaired autophagy. Recessive mutations in this gene have been associated with a hereditary form of spastic paraparesis (HSP). HSP is characterized by progressive spasticity and paralysis of the legs. There is also some evidence linking mutations in this gene with birdshot chorioretinopathy (BSCR) which results in inflammation of the choroid and retina. Alternative splicing results in multiple transcript variants encoding different isoforms.

Recommended Dilution

WB: 1: 500 - 1: 2000

Not yet tested in other applications.

Images



Western blot analysis of lysates from HpeG2 cells, primary antibody was diluted at 1:1000, 4°C overnight

Storage

-20°C for 1 year