

LPD lipase Polyclonal Antibody

Description

Product type	Primary Antibody
Code	BT-AP05060
Host	Rabbit
Isotype	IgG
Size	20ul, 50ul, 100ul
Immunogen	The antiserum was produced against synthesized peptide derived from human LIPI. AA range:289-338
Mol wt	52992
Species reactivity	Human
Clonality	Polyclonal
Recommended application	WB, IHC-p, ELISA
Concentration	1 mg/ml
Full name	LPD lipase Antibody
Synonyms	LIPI; LPDL; PRED5; Lipase member I; LIPI; Cancer/testis antigen 17; CT17; LPD lipase; Membrane-associated phosphatidic acid-selective phospholipase A1-beta; mPA-PLA1 beta

This product is for research use only, not for use in human, therapeutic or diagnostic procedure.

Background

Lipase member I encoded by LIPI is a phospholipase that hydrolyzes phosphatidic acid to produce lysophosphatidic acid. Defects in this gene are a cause of susceptibility to familial hypertriglyceridemia. LIPI is also expressed at high levels in Ewing family tumor cells. Alternative splicing results in multiple transcript variants.

Recommended Dilution

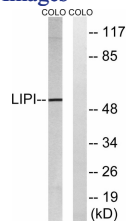
WB: 1: 500 - 1: 2000

IHC: 1: 100 - 1: 300

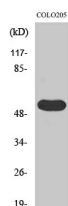
ELISA: 1: 10000

Not yet tested in other applications.

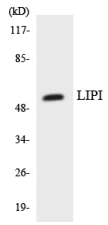
Images



Western blot analysis of lysates from COLO cells, using LIPI Antibody. The lane on the right is blocked with the synthesized peptide.



Western Blot analysis of various cells using LPD lipase Polyclonal Antibody



Western blot analysis of the lysates from HepG2 cells using LIPI antibody.

Storage

-20°C for one year

501 Changsheng S Rd, Nanhu Dist, Jiaxing, Zhejiang, China

Tel: 86 21 31007137 | E-mail: save@bt-laboratory.com | www.bt-laboratory.com