

LRG1 Polyclonal Antibody

Description

| | |
|-------------------------|---|
| Product type | Primary Antibody |
| Code | BT-AP05069 |
| Host | Rabbit |
| Isotype | IgG |
| Size | 20ul, 50ul, 100ul |
| Immunogen | Synthesized peptide derived from the C-terminal region of human LRG1. |
| Mol wt | 38178 |
| Species reactivity | Human |
| Clonality | Polyclonal |
| Recommended application | WB, ELISA |
| Concentration | 1 mg/ml |
| Full name | LRG1 Antibody |
| Synonyms | LRG1; LRG; Leucine-rich alpha-2-glycoprotein; LRG |

This product is for research use only, not for use in human, therapeutic or diagnostic procedure.

Background

The leucine-rich repeat (LRR) family of proteins, including LRG1, have been shown to be involved in protein-protein interaction, signal transduction, and cell adhesion and development. LRG1 is expressed during granulocyte differentiation.

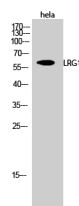
Recommended Dilution

WB: 1: 500 - 1: 2000

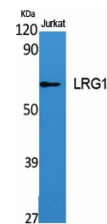
ELISA: 1: 5000

Not yet tested in other applications.

Images



Western Blot analysis of hela cells using LRG1 Polyclonal Antibody



Western Blot analysis of various cells using LRG1 Polyclonal Antibody

Storage

-20°C for one year