

TEKT1 Rabbit Polyclonal Antibody

Description

Product type	Primary Antibody
Code	BT-AP05071
Host	Rabbit
Isotype	IgG
Size	20ul, 50ul, 100ul
Immunogen	Synthesized peptide derived from human TEKT1
Mol wt	45980
Species reactivity	Human, Mouse, Rat
Clonality	Polyclonal
Recommended application	WB
Concentration	1 mg/ml
Full name	TEKT1
Synonyms	TEKT1

This product is for research use only, not for use in human, therapeutic or diagnostic procedure.

Background

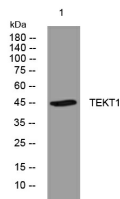
This gene product belongs to the tektin family of proteins. Tektins comprise a family of filament-forming proteins that are coassembled with tubulins to form ciliary and flagellar microtubules. This gene is predominantly expressed in the testis and in mouse| tektin 1 mRNA was localized to the spermatocytes and round spermatids in the seminiferous tubules| indicating that it may play a role in spermatogenesis.

Recommended Dilution

WB: 1: 500 - 1: 2000

Not yet tested in other applications.

Images



Western blot analysis of lysates from U2OS cells, primary antibody was diluted at 1:1000, 4°C overnight

Storage

-20°C for 1 year

501 Changsheng S Rd, Nanhu Dist, Jiaxing, Zhejiang, China

Tel: 86 21 31007137 | E-mail: save@bt-laboratory.com | www.bt-laboratory.com