

LRRC41 Polyclonal Antibody

Description

Product type	Primary Antibody
Code	BT-AP05081
Host	Rabbit
Isotype	IgG
Size	20ul, 50ul, 100ul
Immunogen	The antiserum was produced against synthesized peptide derived from human LRRC41. AA range:391-440
Mol wt	88650
Species reactivity	Human, Mouse, Rat
Clonality	Polyclonal
Recommended application	WB, IHC-p, ELISA
Concentration	1 mg/ml
Full name	LRRC41 Antibody
Synonyms	LRRC41; MUF1; PP7759; Leucine-rich repeat-containing protein 41; Protein Muf1

This product is for research use only, not for use in human, therapeutic or diagnostic procedure.

Background

LRRC41 is a Protein Coding gene. Leucine-rich repeat-containing protein 41 is a probable substrate recognition component of an ECS (Elongin BC-CUL2/5-SOCS-box protein) E3 ubiquitin ligase complex which mediates the ubiquitination and subsequent proteasomal degradation of target proteins. Among its related pathways are Immune System and Antigen processing- Ubiquitination and Proteasome degradation. Gene Ontology (GO) annotations related to this gene include protein homodimerization activity.

Recommended Dilution

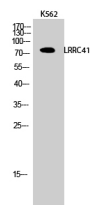
WB: 1: 500 - 1: 2000

IHC: 1: 100 - 1: 300

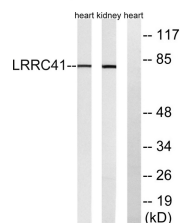
ELISA: 1: 5000

Not yet tested in other applications.

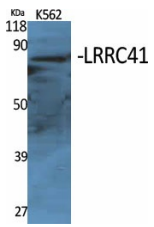
Images



Western Blot analysis of K562 cells using LRRC41 Polyclonal Antibody



Western blot analysis of lysates from rat kidney and rat heart cells, using LRRC41 Antibody. The lane on the right is blocked with the synthesized peptide.



Western Blot analysis of various cells using LRRC41 Polyclonal Antibody

Storage

-20°C for one year

501 Changsheng S Rd, Nanhu Dist, Jiaxing, Zhejiang, China

Tel: 86 21 31007137 | E-mail: save@bt-laboratory.com | www.bt-laboratory.com