

LRRK1 Polyclonal Antibody

Description

Product type	Primary Antibody
Code	BT-AP05082
Host	Rabbit
Isotype	IgG
Size	20ul, 50ul, 100ul
Immunogen	The antiserum was produced against synthesized peptide derived from human LRRK1. AA range:361-410
Mol wt	227843
Species reactivity	Human
Clonality	Polyclonal
Recommended application	IHC-p, IF, ELISA
Concentration	1 mg/ml
Full name	LRRK1 Antibody
Synonyms	LRRK1; KIAA1790; Leucine-rich repeat serine/threonine-protein kinase 1

This product is for research use only, not for use in human, therapeutic or diagnostic procedure.

Background

The phosphorylation and dephosphorylation of proteins on serine and threonine residues is an essential means of regulating a broad range of cellular functions in eukaryotes, including cell division, homeostasis and apoptosis. A group of proteins that are intimately involved in this process are the serine/threonine (Ser/Thr) protein kinases. LRRK1 (leucine-rich repeat serine/threonine-protein kinase 1), also known as RPK6, Roco1 or KIAA1790, is a 2038 amino acid cytoplasmic protein that contains one protein kinase domain, four ANK repeats and 11 leucine-rich repeats and belongs to the Ser/Thr protein kinase family. Using magnesium as a cofactor, LRRK1 catalyzes the ATP-dependent phosphorylation of target proteins. The gene encoding LRRK1, which is expressed as four alternatively spliced isoforms, is thought to be involved in the pathogenesis of Parkinson's disease.

Recommended Dilution

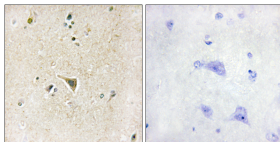
IHC: 1: 100 - 1: 300

IF: 1: 200 - 1: 1000

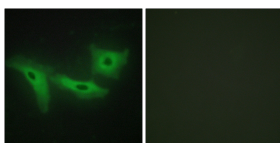
ELISA: 1: 5000

Not yet tested in other applications.

Images



Immunohistochemistry analysis of paraffin-embedded human brain tissue, using LRRK1 Antibody. The picture on the right is blocked with the synthesized peptide.



Immunofluorescence analysis of HeLa cells, using LRRK1 Antibody. The picture on the right is blocked with the synthesized peptide.

Storage

-20°C for one year

501 Changsheng S Rd, Nanhu Dist, Jiaxing, Zhejiang, China

Tel: 86 21 31007137 | E-mail: save@bt-laboratory.com | www.bt-laboratory.com