

LSP1 Polyclonal Antibody

Description

Product type	Primary Antibody
Code	BT-AP05094
Host	Rabbit
Isotype	IgG
Size	20ul, 50ul, 100ul
Immunogen	The antiserum was produced against synthesized peptide derived from human LSP1. AA range:104-153
Mol wt	37192
Species reactivity	Human
Clonality	Polyclonal
Recommended application	WB, ELISA
Concentration	1 mg/ml
Full name	LSP1 Antibody
Synonyms	LSP1; WP34; Lymphocyte-specific protein 1; 47 kDa actin-binding protein; 52 kDa phosphoprotein; pp52; Lymphocyte-specific antigen WP34

This product is for research use only, not for use in human, therapeutic or diagnostic procedure.

Background

LSP1 encodes an intracellular F-actin binding protein. The protein is expressed in lymphocytes, neutrophils, macrophages, and endothelium and may regulate neutrophil motility, adhesion to fibrinogen matrix proteins, and transendothelial migration. Alternative splicing results in multiple transcript variants encoding different isoforms.

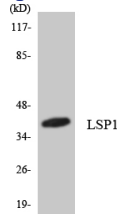
Recommended Dilution

WB: 1: 500 - 1: 2000

ELISA: 1: 5000

Not yet tested in other applications.

Images



Western blot analysis of the lysates from Jurkat cells using LSP1 antibody.

Storage

-20°C for one year