

LTB4DH Polyclonal Antibody

Description

Product type	Primary Antibody
Code	BT-AP05099
Host	Rabbit
Isotype	IgG
Size	20ul, 50ul, 100ul
Immunogen	The antiserum was produced against synthesized peptide derived from human PTGR1. AA range:75-124
Mol wt	35870
Species reactivity	Human
Clonality	Polyclonal
Recommended application	WB, ELISA
Concentration	1 mg/ml
Full name	LTB4DH Antibody
Synonyms	PTGR1; LTB4DH; Prostaglandin reductase 1; PRG-1; 15-oxoprostaglandin 13-reductase; NADP-dependent leukotriene B4 12-hydroxydehydrogenase

This product is for research use only, not for use in human, therapeutic or diagnostic procedure.

Background

PTGR1 encodes an enzyme that is involved in the inactivation of the chemotactic factor, leukotriene B4. Prostaglandin reductase 1 specifically catalyzes the NADP⁺ dependent conversion of leukotriene B4 to 12-oxo-leukotriene B4. A pseudogene of this gene is found on chromosome 1. Alternative splicing results in multiple transcript variants.

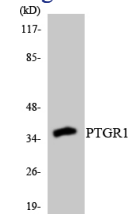
Recommended Dilution

WB: 1: 500 - 1: 2000

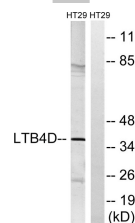
ELISA: 1: 5000

Not yet tested in other applications.

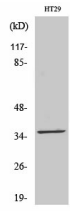
Images



Western blot analysis of the lysates from 293 cells using PTGR1 antibody.



Western blot analysis of lysates from HT-29 cells, using PTGR1 Antibody. The lane on the right is blocked with the synthesized peptide.



Western Blot analysis of various cells using LTB4DH Polyclonal Antibody

Storage

-20°C for one year

501 Changsheng S Rd, Nanhu Dist, Jiaxing, Zhejiang, China

Tel: 86 21 31007137 | E-mail: save@bt-laboratory.com | www.bt-laboratory.com