

## TLE3 Rabbit Polyclonal Antibody

### Description

<b>Product type</b>	Primary Antibody
<b>Code</b>	BT-AP05128
<b>Host</b>	Rabbit
<b>Isotype</b>	IgG
<b>Size</b>	20ul, 50ul, 100ul
<b>Immunogen</b>	Synthesized peptide derived from human TLE3
<b>Mol wt</b>	N/A
<b>Species reactivity</b>	Human, Mouse, Rat
<b>Clonality</b>	Polyclonal
<b>Recommended application</b>	WB
<b>Concentration</b>	1 mg/ml
<b>Full name</b>	TLE3
<b>Synonyms</b>	TLE3; Transducin-like enhancer protein 3; Enhancer of split groucho-like protein 3; ESG3

**This product is for research use only, not for use in human, therapeutic or diagnostic procedure.**

### Background

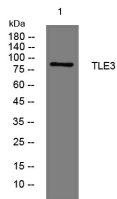
This gene encodes a transcriptional co-repressor protein that belongs to the transducin-like enhancer family of proteins. The members of this family function in the Notch signaling pathway that regulates determination of cell fate during development. Expression of this gene has been associated with a favorable outcome to chemotherapy with taxanes for ovarian carcinoma. Alternate splicing results in multiple transcript variants. Additional alternatively spliced transcript variants of this gene have been described but their full-length nature is not known.

### Recommended Dilution

WB: 1: 500 - 1: 2000

Not yet tested in other applications.

### Images



Western blot analysis of lysates from THP-1 cells, primary antibody was diluted at 1:1000, 4°C overnight

### Storage

-20°C for 1 year