

LZK Polyclonal Antibody

Description

Product type	Primary Antibody
Code	BT-AP05129
Host	Rabbit
Isotype	IgG
Size	20ul, 50ul, 100ul
Immunogen	The antiserum was produced against synthesized peptide derived from human M3K13. AA range:151-200
Mol wt	108296
Species reactivity	Human, Mouse, Rat
Clonality	Polyclonal
Recommended application	WB, IHC-p, ELISA
Concentration	1 mg/ml
Full name	LZK Antibody
Synonyms	MAP3K13; LZK; Mitogen-activated protein kinase kinase kinase 13; Leucine zipper-bearing kinase; Mixed lineage kinase; MLK

This product is for research use only, not for use in human, therapeutic or diagnostic procedure.

Background

Mitogen-activated protein kinase kinase kinase 13 encoded by MAP3K13 is a member of serine/threonine protein kinase family. Mitogen-activated protein kinase kinase kinase 13 contains a dual leucine-zipper motif, and has been shown to form dimers/oligomers through its leucine-zipper motif. Mitogen-activated protein kinase kinase kinase 13 can phosphorylate and activate MAPK8/JNK, MAP2K7/MKK7, which suggests a role in the JNK signaling pathway.

Recommended Dilution

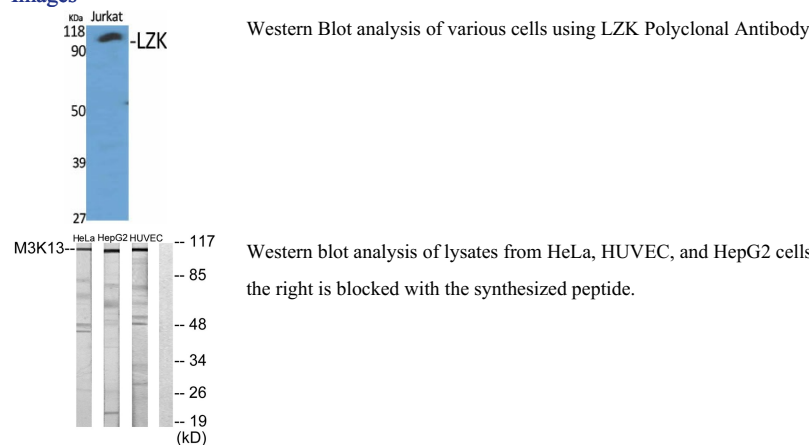
WB: 1: 500 - 1: 2000

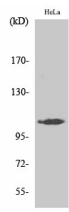
IHC: 1: 100 - 1: 300

ELISA: 1: 20000

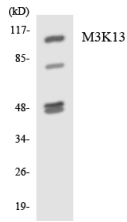
Not yet tested in other applications.

Images





Western Blot analysis of HepG2 cells using LZK Polyclonal Antibody



Western blot analysis of the lysates from HepG2 cells using M3K13 antibody.

Storage

-20°C for one year

501 Changsheng S Rd, Nanhu Dist, Jiaxing, Zhejiang, China

Tel: 86 21 31007137 | E-mail: save@bt-laboratory.com | www.bt-laboratory.com