

MACC1 Polyclonal Antibody

Description

Product type	Primary Antibody
Code	BT-AP05139
Host	Rabbit
Isotype	IgG
Size	20ul, 50ul, 100ul
Immunogen	The antiserum was produced against synthesized peptide derived from the Internal region of human MACC1. AA range:411-460
Mol wt	96639
Species reactivity	Human, Mouse
Clonality	Polyclonal
Recommended application	WB, ELISA
Concentration	1 mg/ml
Full name	MACC1 Antibody
Synonyms	MACC1; Metastasis-associated in colon cancer protein 1; SH3 domain-containing protein 7a5

This product is for research use only, not for use in human, therapeutic or diagnostic procedure.

Background

MACC1 is a key regulator of the hepatocyte growth factor (HGF; MIM 142409)-HGF receptor (HGFR, or MET; MIM 164860) pathway, which is involved in cellular growth, epithelial-mesenchymal transition, angiogenesis, cell motility, invasiveness, and metastasis. Expression of MACC1 in colon cancer (MIM 114500) specimens is an independent prognostic indicator for metastasis formation and metastasis-free survival (Stein et al. 2009 [PubMed: 19098908]).

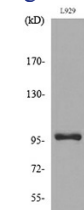
Recommended Dilution

WB: 1: 500 - 1: 2000

ELISA: 1: 20000

Not yet tested in other applications.

Images



Western blot analysis of lysate from L929 cells, using MACC1 Antibody.



Western Blot analysis of L929 cells using MACC1 Polyclonal Antibody. Secondary antibody was diluted at 1:20000

Storage

-20°C for one year

501 Changsheng S Rd, Nanhu Dist, Jiaxing, Zhejiang, China

Tel: 86 21 31007137 | E-mail: save@bt-laboratory.com | www.bt-laboratory.com