

mAChR M2 Polyclonal Antibody

Description

Product type	Primary Antibody
Code	BT-AP05141
Host	Rabbit
Isotype	IgG
Size	20ul, 50ul, 100ul
Immunogen	The antiserum was produced against synthesized peptide derived from human CHRM2. AA range:185-234
Mol wt	51715
Species reactivity	Human, Mouse, Rat
Clonality	Polyclonal
Recommended application	WB, IF, ELISA
Concentration	1 mg/ml
Full name	mAChR M2 Antibody
Synonyms	CHRM2; Muscarinic acetylcholine receptor M2

This product is for research use only, not for use in human, therapeutic or diagnostic procedure.

Background

The muscarinic cholinergic receptors belong to a larger family of G protein-coupled receptors. The functional diversity of these receptors is defined by the binding of acetylcholine to these receptors and includes cellular responses such as adenylate cyclase inhibition, phosphoinositide degeneration, and potassium channel mediation. Muscarinic receptors influence many effects of acetylcholine in the central and peripheral nervous system. The muscarinic cholinergic receptor 2 is involved in mediation of bradycardia and a decrease in cardiac contractility. Multiple alternatively spliced transcript variants have been described for this gene.

Recommended Dilution

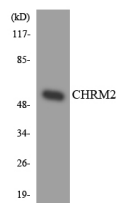
WB: 1: 500 - 1: 2000

IF: 1: 200 - 1: 1000

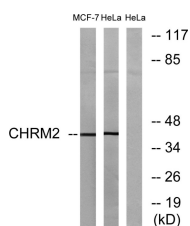
ELISA: 1: 20000

Not yet tested in other applications.

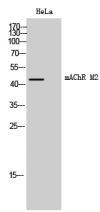
Images



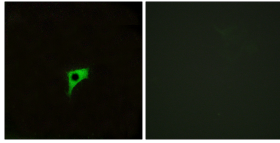
Western blot analysis of the lysates from HUVEC cells using CHRM2 antibody.



Western blot analysis of lysates from HeLa and MCF-7 cells, using CHRM2 Antibody. The lane on the right is blocked with the synthesized peptide.



Western Blot analysis of HeLa cells using mAChR M2 Polyclonal Antibody



Immunofluorescence analysis of LOVO cells, using CHR2 Antibody. The picture on the right is blocked with the synthesized peptide.

Storage

-20°C for one year

501 Changsheng S Rd, Nanhu Dist, Jiaxing, Zhejiang, China

Tel: 86 21 31007137 | E-mail: save@bt-laboratory.com | www.bt-laboratory.com