

MAD1 Polyclonal Antibody

Description

Product type	Primary Antibody
Code	BT-AP05147
Host	Rabbit
Isotype	IgG
Size	20ul, 50ul, 100ul
Immunogen	The antiserum was produced against synthesized peptide derived from human MAD1. AA range:394-443
Mol wt	83067
Species reactivity	Human
Clonality	Polyclonal
Recommended application	IF, ELISA
Concentration	1 mg/ml
Full name	MAD1 Antibody
Synonyms	MAD1L1; MAD1; TXBP181; Mitotic spindle assembly checkpoint protein MAD1; Mitotic arrest deficient 1-like protein 1; MAD1-like protein 1; Mitotic checkpoint MAD1 protein homolog; HsMAD1; hMAD1; Tax-bin

This product is for research use only, not for use in human, therapeutic or diagnostic procedure.

Background

MAD1L1 (MAD1 mitotic arrest deficient like 1) is a component of the mitotic spindle-assembly checkpoint that prevents the onset of anaphase until all chromosome are properly aligned at the metaphase plate. MAD1L1 functions as a homodimer and interacts with MAD2L1. MAD1L1 may play a role in cell cycle control and tumor suppression. Alternative splicing results in multiple transcript variants.

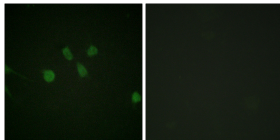
Recommended Dilution

IF: 1: 200 - 1: 1000

ELISA: 1: 10000

Not yet tested in other applications.

Images



Immunofluorescence analysis of NIH/3T3 cells, using MAD1 Antibody. The picture on the right is blocked with the synthesized peptide.

Storage

-20°C for one year